



# MONTHLY MEMBERSHIP PROGRESS REPORT

District 33 S

Results as of: 08/31/2017

GMT: MAHESH CHITNIS

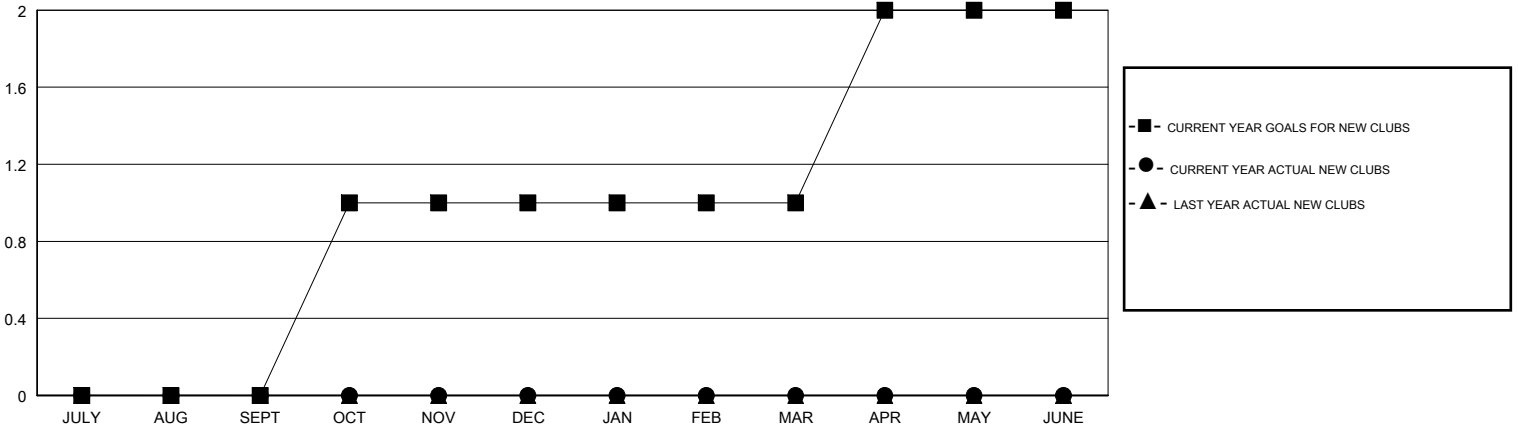
LOCATION MASSACHUSETTS

GMT CA

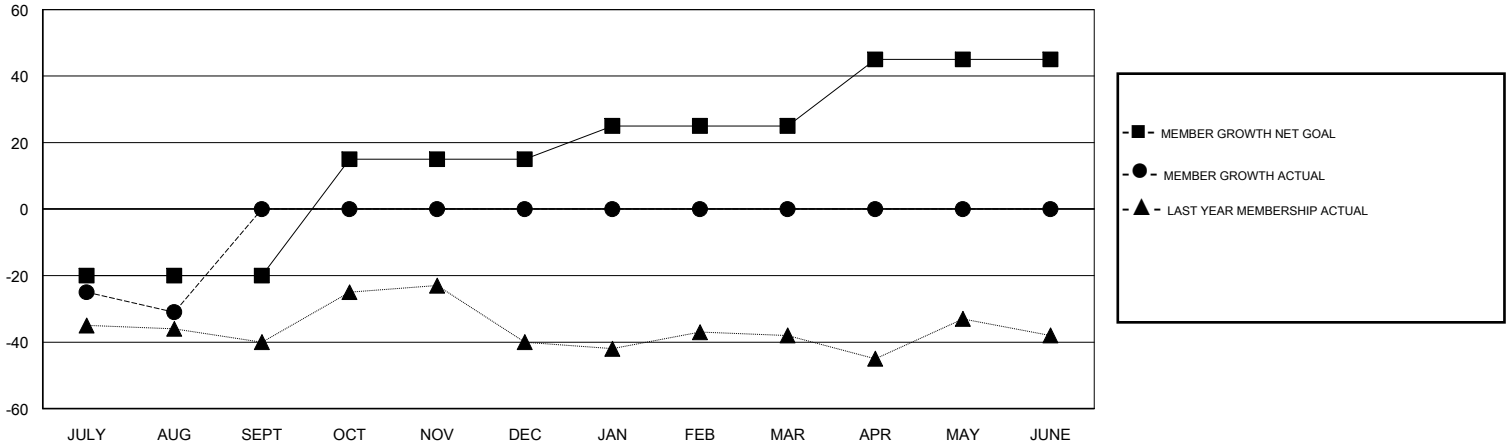
Clubs			
RESULTS FOR 2017-2018			
QUARTER	NEW CLUB GOAL	NEW CLUBS	DROPPED CLUBS
JULY/AUG/SEPT	0	0	0
OCT/NOV/DEC	1	0	0
JAN/FEB/MAR	0	0	0
APR/MAY/JUNE	1	0	0

Members			
RESULTS FOR 2017-2018			
QUARTER	MEMBER GROWTH NET GOAL	MEMBER GROWTH ACTUAL	DROPPED MEMBERS ACTUAL (including transfers)
JULY/AUG/SEPT	-20	9	40
OCT/NOV/DEC	35	0	0
JAN/FEB/MAR	10	0	0
APR/MAY/JUNE	20	0	0

GOALS AND ACTUAL NEW CLUBS CUMULATIVE



GOALS AND ACTUAL MEMBERS CUMULATIVE



DROPPED CLUBS: 0	8 CLUBS OF 47 ADDED 1 OR MORE NEW MEMBERS	<u>GENDER DISTRIBUTION</u>
DROPPED MEMBERS	<a href="#">CLICK HERE FOR CUMULATIVE MEMBERSHIP DATA</a>	MALE 1,119 (66.13%)
DECEASED 5		FEMALE 573 (33.87%)
CLUB CANCELLED 0		Women Percentage Fiscal Year Goal: 40%
OTHER 35		TOTAL FAMILY UNIT MEMBERS 220
TOTAL 40		FAMILY MEMBERS PAYING HALF DUES 113